

MESSER

Cutting Systems



Messer Cutting Systems (China) Ltd.

528 Nanbang Road
Kunshan, Jiangsu, China 215300
E-mail: messer@messer-cs.cn
Tel: (86)512 5731 4949 Fax: (86)512 5731 2269
<http://www.messer-cs.cn>

梅塞尔切割焊接(中国)有限公司

中国江苏省昆山市南浜路528号
邮编: 215300
邮箱: messer@messer-cs.cn
电话: (86)512 5731 4949 传真: (86)512 5731 2269
网址: www.messer-cs.cn

Messer Cutting Systems GmbH
Otto-Hahn-Strasse 2-4, D-64823, Gross-Umstadt, Deutschland
Tel: ++49 6078 787 436
Fax: ++49 6078 787 717

Messer Cutting Systems, Inc.
W141, N9427, Fountain Blvd, Menomonee Falls, WI53051, U.S.A
Tel: ++1 262 532 4636
Fax: ++1 262 532 4646

Messer Cutting Systems India Privat Ltd.
694/2, Sundarapuram Road Madukkarai,
Coimbatore 641105 Tamil Naidu, India
Tel: ++91 4226 455 521

Messer Cutting Systems Korea Ltd.
#624, Ocean TowerB/D,
760-3, Woo-1, Dong, Haeundae-ku, Pusan Korea 612716
Tel: ++82 51 7470055
Fax: ++82 51 7470087

Messer Cutting Indústria e Comércio de Equipamentos de Soldas Ltda.
(Messer Cutting Systems)
Av. Juvenal Arantes, 2500 Galpao 1 Condomínio Industrial Bracaiúva
CEP: 13212-354 Jundiá Estado do Sao Paulo, Brasil
Tel: ++55 11 4525 6680
Tel: ++55 11 4525 6685

Our products are produced according to the latest technical developments. We reserve the rights for technical changes during production.
Therefore, claims of whatever kind can't derived from prospectus.
所有产品均采用最新技术制造。我们保留未经通知修改设计和/或规格的权利。

Our products are produced according to the latest technical developments. We reserve the rights for technical changes during production.
所有产品均采用最新技术制造。我们保留未经通知修改设计和/或规格的权利。
本样本所有图片、技术均属梅塞尔公司专有，未经许可严禁复制 2014年10月10日 Ver:2014-10(SK)

德国技术 精艺切割



梅塞尔切割焊接(中国)有限公司
Messer Cutting Systems (China) Ltd

公司简介

About Us About Us About Us



Since Adolf Messer established the first works in Germany in 1898, Messer Industries GmbH has become a multinational corporation which produces all kinds of gas and cutting & welding & material. Nowadays it owns more than 150 subsidiaries & agents all over the world. Messer Cutting Systems (China) Ltd. one of its members, is a solely German-owned enterprise, specialized in manufacturing CNC cutting machines.

We bring Messer's advanced technology to Asia-Pacific; supply high-quality products and best services in the field of thermal cutting.

Our commitment:

First in quality

First in customer satisfaction

First in services



1898年阿道夫·梅塞尔在德国创建第一家工厂，经过一百多年的发展，已成为世界上生产各种工业气体和切割焊接设备/焊材的跨国集团公司-德国梅塞尔工业集团，在世界各地拥有150多家子公司和代表机构。梅塞尔切割焊接(中国)有限公司是其成员之一，是一家专门生产销售数控热切割设备的德国独资企业。

本公司将德国梅塞尔公司最先进的技术引入亚太地区，致力于在热切割领域为用户提供最优的产品和最佳的服务。

我们的宗旨是：质量第一、用户第一、售后服务第一！我们热忱欢迎社会各界朋友光临！

产品及服务 Products & Services

切割设备

- 数控火焰/等离子切割机
- 数控水下等离子切割机
- 数控精细等离子切割机
- 数控激光切割机
- 钢厂火切机
- 龙门板条切割机

Cutting Equipment

- CNC flame/plasma cutting machines
- CNC underwater plasma cutting machines
- CNC high precision plasma cutting machines
- CNC laser cutting machines
- Steel mill cutting equipment
- Gantry strip cutting machines

百年梅塞尔

- 精湛技艺、质量和服务的象征
- 德国 TÜV公司ISO 9001认证
 - 产品通过欧洲CE认证
 - 产品批量返销欧美
 - 中国最大的数控切割机专业生产企业
 - 国内首创等离子自动回转坡口切割机
- 全国双优外资企业
- 高新技术企业
 - 外商先进技术企业
 - 国内首创光纤激光切割机
- Excellent workmanship guarantees top quality & best service
 - TÜV ISO 9001 certified
 - All our products are CE proved
 - Product exports to Europe & America
 - The market leading cutting manufacturer in China
 - We initiated the first Fully Automatic Contour Bevel Plasma Machine in China
 - Recognized as Excellent Economic & Export Performance Foreign Investment business venture
 - Award winning high-tech products
 - Distinguished as an Advanced Technology Company
 - Domestic pioneer on Fiberlaser cutting technology

优良的设计，高品质的质量

Outstanding Design & Excellent Quality



- 精密驱动

精密加工、热处理的重负荷齿条保证纵向传动高精度和长寿命。
- Precision Drive

Precision machined, hardened, heavy duty drive rack on both the long and the cross travel direction, ensure high accuracy and long service life.
- 精密导轨

由重负荷精加工的路轨制成的机器导轨保证机器整个工作期间的高精度和稳定。
- Precision Track

The machine track is made in heavy duty quality machined railway track, gives accuracy and stability to the machine for the whole working life.
- 紧凑的外形设计

所有气管和电缆都通过坦克链传送，保证了管路整洁，并能减少机器在高速拐弯时的过冲倾向。
- Low Profile Design

Hose and cable supply on the machine is via cable drag chain, keeping hoses tidy and reducing any tendency for machine overshoot when cornering at critical speed.
- 高品质的机架结构

保证机器最大的刚性，最轻的重量，高速时优越动态特性。
- Patented Quality

Ensures maximum rigidity, light weight and superb dynamic performance even at high speeds.



性能参数 Specification			
Rapid speed 快速行程速度：	6000mm/min 12000mm/min 24000mm/min	stepless adjustable 无级可调	
Plasma cutting speed 等离子切割速度：	50-8000mm/min	stepless adjustable 无级可调	
Flame cutting speed 火焰切割速度：	50-1000mm/min	stepless adjustable 无级可调	
Longitudinal guiding accuracy 纵向导向精度：	±0.2mm/10m		
Repeative accuracy 重复精度：	±0.3mm		
Cutting accuracy 切割精度：	DIN 2310 first grade 德国DIN 2310标准I级精度		
Line scribing accuracy 尺寸精度：	±0.6mm		

大型数控切割机

OMNIMAT®



OMNIMAT[®]是一种多功能、多轴控制、性能完美的大型数控切割机。根据不同角度、不同材料，可选择不同的吊架，可配划线装置、冲打及钻孔装置，直线或旋转三割炬、回转等离子头。

OMNIMAT® is a large size CNC cutting machine with heavy duty structure and multiaxis control, suitable for a wide field of applications and complicate cutting jobs. A number of different torch suspensions with tool holders is available e.g. marking tools, punching and drilling devices, strip cutting attachments, triple torch, plasma arc contour bevel unit.

利用无限回转三割炬吊架DAFL, 很容易在板材上产生X、Y、K型焊接坡口, 自动高度控制采用特殊的优良电容调高装置。

Weld edge preparations of Y, K and X forms, onto the edges of profiled components, are easily done with the infinitely rotating triple torch suspension DAFL. The automatic height sensing is achieved via a capacitive height sensing unit.

梅塞尔专利技术等离子轮廓坡口复合斜切割单元融合了机器人轴运动技术,使切割枪坡口角度控制简单、直接。

Messer plasma arc contour bevel unit incorporates articulating robotic axis motion for a simple control of the torch bevel angle.

技术参数 OMNIMAT® Technical Data

Track width 轨距 (mm)	6000	6500	7000	8000	9000	10000	11000
Cutting width 切割宽度* (mm)	5000	5500	6000	7000	8000	9000	10000
Overall width 整机宽度* (mm)	7100	7600	8100	9100	10100	11100	12100
Drive speed 驱动速度	100-12000 mm/min up to 24000 mm/min						
*May change by the number of torches 会随割炬数量而变化							

自动坡口等离子切割机

Auto Beveling Contour Plasma Cutting Machine

梅塞尔专利技术“Global Rotator”自动回转等离子坡口切割机，采用六轴机器人复合运动技术。一次成型“V”形曲线焊接坡口和“Y”形坡口。

Messer Auto Beveling Contour Plasma Cutting Machine, incorporated with the patented Global Rotator & advanced 6 axis robotic compound movement control technology, is ideally suited for the “V” & “Y” beveling in only one pass.

等离子回转头“Global Rotator”

高精度、高速度…

…优良的性能

无与伦比的零件质量

Generation Plasma “Global Rotator”

High accuracy, High speed...

...Excellent performance

Outstanding part quality

Delta 等离子回转头

高性能交流电机

C轴可旋转 $\pm 460^{\circ}$

可编程的电弧电流，电压及坡口角度
弧压自动高度控制，精度达 $\pm 0.15\text{mm}$

Global Rotator Delta

AC drives for high performance

C-axis rotation of $\pm 460^\circ$

Programmable arc current, arc voltage, and bevel
Automatic torch height control by arc voltage with
an accuracy of $\pm 0.15\text{mm}$

数控火焰等离子切割机



OmniMat T[®] 系列切割机是一种精密的中型数控切割机，该机型是高切割精度和生产效率的完美结合，可适用于火焰和等离子切割。

OmniMat T[®] is a middle size CNC cutting machine with precise structure. High cutting accuracy and product economy are perfectly combined for both oxy-fuel and plasma applications.

- TL 170/OmniLift单割炬**
 升降行程170mm/200mm/300mm
 可选择电容自动调高系统
 OmniLift可配等离子弧压自动调高系统
 - TL 170/OmniLift torch suspension**
 Up/down stroke 170mm/200mm/300mm
 Optional auto capacitive height sensing
 Optional auto arc height sensing for OmniLift
 - S型直线三割炬**
 用于直线V、X、Y、K型坡口切割
 角度调整 0°-45°
 板条宽度 50-130mm
 可选择机械式自动调高系统
 - S Triple-torch straight cutting head**
 For V, X, Y and K straight cuts
 Angle adjustment 0°-45°
 Strip width 50-130mm
 Optional mechanical height sensing



喷粉划线割炬在工件上可画出宽度为0.6-1.0mm的线，其原理为利用高温火焰将锌粉融化于工件表面。画线永久保留且可在其上直接进行焊接。

用于金属表面的等离子划线装置，能精确的画出0.8-2.0mm宽度的高质量的线。

The powder marking torch can plot lines from 0.6 to 1.0mm width on the work-piece, by fusing zinc powder onto the surface using the heating flame. This indelible line can be used for lines, drawings and texts. It can be welded over without problems.

The plasma arc marking unit melts the material surface, and enables precise high quality marking of lines between 0.8 and 2.0mm width according to the required application.

技术参数 Ominimat T Technical Data

Track width 轨距 (mm)	3000	3500	4000	4500	5000	5500	6000	6500
Cutting width 切割宽度* (mm)	2000	2500	3000	3500	4000	4500	5000	5500
Overall width 整机宽度* (mm)	4000	4500	5000	5500	6000	6500	7000	7500
Drive speed 驱动速度	50-12000mm/min							
Max. No. of heads 割炬最多配置	6 (2 plasma available 其中可配2个等离子)							
*May change by the number of torches 会随割炬数量而变化 , 轨距最大13000mm								

数控火焰等离子切割机

ComCut®



ComCut®系列数控切割机是德国Messer技术的代表作。整机的机械和电气采用欧洲标准，80%部件从国外进口，现批量返销欧美市场，在国内市场也大获用户好评。ComCut具有高精度、高可靠性和极高的性能价格比。快捷、高效、可靠！——ComCut®

The Comcut® is ideally suited for the small workshop. It enables you to cut parts applying both flame and plasma at a surprisingly lower price than you would imagine for such a high quality German-engineered machine. The complete installation of the machine is quick, simple and easy , giving you the flexibility to produce parts rapidly, accurately and economically.

技术参数 ComCut® Technical Data

Track width 轨距（mm）	2100	2600	3100	3600	4100
Cutting width 切割宽度*（mm）	1350	1850	2350	2850	3350
Overall width 整机宽度*（mm）	2880	3380	3880	4380	4880
Drive speed 驱动速度	50-6000mm/min, 50-10000mm/min				
Capacitive height sensing 电容调高	MG-S PAN*(optional 选择项)				
Main supply voltage 电源	230V single phase 50Hz 230V 单相， 50赫兹				
*May change by the number of torches 会随割炬数量而变化					

集成数控切割机

Metal Master®

MetalMaster®是一种高速、精密、等离子数控切割机。采用一体式模块化结构，使安装迅速、方便，可以加配抽烟工作台，以达到环保要求。

Metal Master® is a high speed, high accuracy CNC plasma cutting machine. It features compact modular construction for easy and fast installation and commissioning. A fume extraction table is optionally available to satisfy environment requirements.

- **弧压控制高度装置**
升降行程100mm
等离子切割初始定位及弧压自动调高
- **Torch height Control System**
Up/down stroke 100mm
IHS+THC for plasma cutting
- **机械式气动压紧割炬吊架**
实用可靠，适用于等离子切割
升降行程 80mm
气动压紧自动高度调节
- **Mechanical Pneumatic Press Torch Suspension**
Practical and reliable, suitable for plasma cutting
Up/down stroke 80 mm
Pneumatic press type auto height adjustment

技术参数 Metal Master® Technical Data

Model 型号	6020	4020	3020
Effective working area 有效切割范围(mm)	6000×1900	4000×1900	3000×1900
Overall width 整机宽度（mm）	3200		
Drive speed 驱动速度	50-12000mm/min, 50-24000mm/min		
Max. No. of torches 切割最多配置	1		

梅塞镭德 光纤激光切割机

FIBERBLADE®



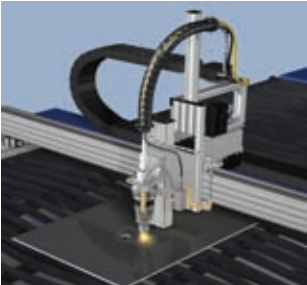
FIBERBLADE IV 3015/4020/6020

梅 塞 镭 德

FIBERBLADE L

梅 塞 镭 德

- 更高的能量转换效率，
光纤激光超过30%（CO₂激光约10%）。
 - 更高的切割速度。
 - 运行成本最低的激光切割机。
 - 无传统光学镜片外光路。
 - 低维护成本。
 - 高可靠性。
 - 超长无故障工作时间。
- Higher total efficiency of the fiber Laser,
over 30% (CO₂ Laser: ca. 10%).
 - Higher cutting speed.
 - Low running costs.
 - Easy beam delivery
 - Low maintenance costs.
 - High reliability.
 - Long mean time between failures.



搭载当前最先进的光纤激光技术、极其强大的驱动系统、纵向和横向高精度直线导轨系统以及无线回转光纤激光坡口切割——帕瓦镭德广泛适用于各种切割应用。

With the modern fibre laser technology, extremely powerful drives, precise linearguides in both longitudinal and transverse directions and a multifaceted bevel head. the PowerBlade is equipped for a wide range of applications.



FIBERBLADE IV® 技术参数 Technical Data

型 号 Model	3015	4020	6020
工作区域 Working area (mm)	3025x1525	4025x2025	6025x2025
定位精度 Positioning accuracy	± 0.03mm/m	± 0.03mm/m	± 0.03mm/m
重复精度 Repeatability accuracy	± 0.01mm/m	± 0.01mm/m	± 0.01mm/m
单轴速度 Axis parallel	100m/min	100m/min	100m/min
联动速度 Simultaneous	140m/min	140m/min	140m/min
加 速 度 Acceleration	1G/1.5G	1G/1.5G	1G/1.5G
交换工作台 Changeover table	标配 Standard	标配 Standard	标配 Standard
激光器功率 Power(KW)	2 / 2.4 / 3 / 4	2 / 2.4 / 3 / 4	2 / 2.4 / 3 / 4

FIBERBLADE L® 技术参数 Technical Data

轨 距 Tracking width (mm)	4000	5000	6000	7500
工作宽度 Working width (mm)	3000	4000	5000	6200
最大速度 Max. speed	24m / min			
定位精度 Positioning accuracy	± 0.1mm/3m			
切割精度 Cutting accuracy	ISO 9013 232			
激光器功率 Power(KW)	2 / 2.4 / 3 / 4			

切割机数控系统

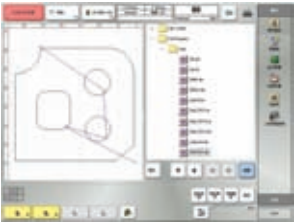
Control Systems for Cutting Machines



Global Control™

- 基于PC,集成超强功能PLC控制的数控系统
- Ethercat现场总线控制，功能模块组态方式，切割应用更加方便、可靠
- 完全的网络应用，可连接到生产计划部门用于数据传输
- 简洁的面板设计，配合大屏幕彩色触摸屏和友好的操作界面，易于操作
- 专家切割系统，配备3级切割数据库，涵盖了所有的切割工序以及工具和消耗品选项，使得高质量的切割应用变得更加轻松

- PC based CNC controller, intergrated super PLC feature.
- Ethercat Bus system,function module configuration mode,cutting process reliable and convenient.
- Fully net-work capatible,capable to connect to production project division for data communication.
- Compact panel with big touch screen and friendly HMI, operation is more convenient.
- Expert cutting system utilized with 3 level database,for all cutting process even down to consumables/all peripheral systems, high cutting quality is easy to access.



- 得益于梅塞尔在热切割领域100余年来的先进经验
Benefitting from over 100 years of Messer’s experience in advanced thermal cutting
- 全集成式，功能强大
Uncountable new powerfull features.

带易损件图片显示的切割数据库（氧燃气/等离子切割）- 使操作简单、直观、快捷！
Cutting Database (Oxyfuel/Plasma) with photographic consumable and part number display
-avoids tedious searching in consumable lists.



Global Control

基于Microsoft.net技术开发的新一代数控系统

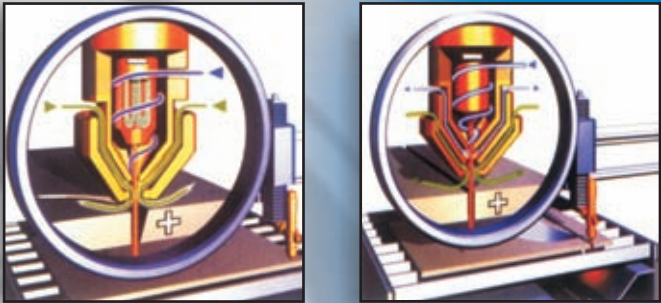
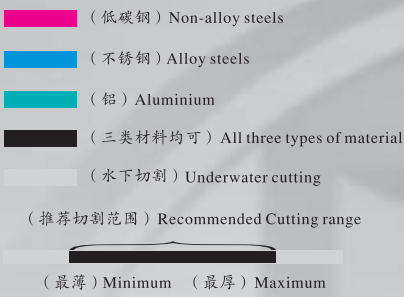
- 完全的网络应用（可实现远程监控和故障诊断）
- 带完整的PLC控制的数控系统响应速度快
- 现场总线控制系统，光缆连接标准的功能模块组建方便和变换简单
- 大屏幕彩色触摸屏和优化的界面设计，操作直观、简单
- 程序输入格式：DIN/ESSI/EIA
- 高精度数字电位器动态速度调节控制，自动优化切割参数
- 创新的操作提示-使操作者快速掌握和避免操作失误
- 8方向操纵杆-手动快速定位
- 用户能扩充专家数据库系统

Modern operating interface based on Microsoft.net technology

- Fully network- and internet-compatible; makes remote polling, remote diagnosis, etc. possible
- Central CNC computer with integrated PLC
-For short reaction times
- Fiber Optic Cable Bus System
-Enables modular construction and simple retrofitting
- Most modern design
-Increases operator acceptance
- Support of all common input formats(DIN/EIA/ESSI)
- Dynamic Speed Control
-Automatic optimization of the cutting results
- Innovative operator support
-Facilitates fast familiarization and avoids operator errors
- Jog mode using dynamic hand-wheel and Joystick
-Get to the point fast!
- 3-levels Database
-Means you can develop your own expert system

数控切割机等离子装置

Plasma Cutting Units for CNC Cutting Machines



系 统 Systems		电 源 及 气 体 供 应 Power and gases supplies		板 材 厚 度 (mm) Plate thicknesses(mm)																
				5	10	15	20	25	30	35	40	50	60	70	80	90	100	120	150	
PowerMAX 105 air plasma cutting system 等离子切割系统	Arc power (电 源) :16.8 kw Current (电 流) :105 amps (stepless 无级调节) Gases (气 体) : compressed air (压缩空气)	<div><div></div><div></div><div></div><div></div><div></div><div></div><div></div><div></div><div></div><div></div><div></div><div></div><div></div><div></div><div></div><div></div><div></div><div></div><div></div><div></div></div> <div>*Dark color: quality cut range *Light color: maximum cut range *深色： 质量切割范围 *浅色： 最大切割范围</div>																		
PowerMAX 125 air plasma cutting system 等离子切割系统	Arc power (电 源) : 21.9 kw Current (电 流) :125 amps (stepless 无级调节) Gases (气 体) : compressed air (压缩空气)	<div><div></div><div></div><div></div><div></div><div></div><div></div><div></div><div></div><div></div><div></div><div></div><div></div><div></div><div></div><div></div><div></div><div></div><div></div><div></div><div></div></div>																		
MaxPro200 plasma cutting system 等离子切割系统	Arc power (电 源) : 33 kw Current (电 流) : 200amps (stepless无级调节) Gases (气 体) : compressed air (压缩空气) (*Gas options: Argon, Hydrogen, Nitrogen) (选择气体: 氩、氢、氮)	<div><div></div><div></div><div></div><div></div><div></div><div></div><div></div><div></div><div></div><div></div><div></div><div></div><div></div><div></div><div></div><div></div><div></div><div></div><div></div><div></div></div>																		
HPR 130XD finejet plasma cutting system 精细等离子切割系统	Arc power (电 源) : 19.5kw Current (电 流) : 30-130amps (stepless 无级调节) Gases (气 体) : Argon (氩气), compressed air (压缩空气) 选择气体 (氩气、氩氢混合气)	<div><div></div><div></div><div></div><div></div><div></div><div></div><div></div><div></div><div></div><div></div><div></div><div></div><div></div><div></div><div></div><div></div><div></div><div></div><div></div><div></div></div>																		
HPR 260XD finejet plasma cutting system 精细等离子切割系统	Arc power (电 源) : 45.5kw Current (电 流) : 30-260amps (stepless 无级调节) Gases (气 体) : Argon (氩气), compressed air (压缩空气) 选择气体 (氩气、氩氢混合气)	<div><div></div><div></div><div></div><div></div><div></div><div></div><div></div><div></div><div></div><div></div><div></div><div></div><div></div><div></div><div></div><div></div><div></div><div></div><div></div><div></div></div>																		
HPR400 XD finejet plasma cutting system 精细等离子切割系统	Arc power (电 源) : 80 kw Current (电 流) : 30-400amps (stepless 无级调节) Gases (气 体) : Argon (氩气), compressed air (压缩空气) 选择气体 (氩气、氩氢混合气)	<div><div></div><div></div><div></div><div></div><div></div><div></div><div></div><div></div><div></div><div></div><div></div><div></div><div></div><div></div><div></div><div></div><div></div><div></div><div></div><div></div></div>																		
HPR800XD finejet plasma cutting system 精细等离子切割系统	Arc power (电 源) : 33 kw Current (电 流) : 800 amps (stepless 无级调节) Gases (气 体) : Argon (氩气), compressed air (压缩空气) 选择气体 (氩气、氩氢混合气)	<div><div></div><div></div><div></div><div></div><div></div><div></div><div></div><div></div><div></div><div></div><div></div><div></div><div></div><div></div><div></div><div></div><div></div><div></div><div></div><div></div></div>																		
PA-S 45/ FineFocus 450 CNC plasma cutting system 精细等离子切割系统	Arc power (电 源) : 30kw/34kw Current (电 流) : 40-130 amps (stepless 无级调节) Gases (气 体) : Argon (氩), Hydrogen (氢), Nitrogen (氮), Compressed air (压缩空气), Oxygen (氧)	<div><div></div><div></div><div></div><div></div><div></div><div></div><div></div><div></div><div></div><div></div><div></div><div></div><div></div><div></div><div></div><div></div><div></div><div></div><div></div><div></div></div>																		
FineFocus 600 CNC plasma cutting system 精细等离子切割系统	Arc power (电 源) : 62 kw Current (电 流) : 40-200 amps (stepless 无级调节) Gases (气 体) : Argon (氩), Hydrogen (氢), Nitrogen (氮), Compressed air (压缩空气), Oxygen (氧)	<div><div></div><div></div><div></div><div></div><div></div><div></div><div></div><div></div><div></div><div></div><div></div><div></div><div></div><div></div><div></div><div></div><div></div><div></div><div></div><div></div></div>																		
FineFocus 800 CNC plasma cutting system 精细等离子切割系统	Arc power (电 源) : 83 kw Current (电 流) : 80-300 amps (stepless 无级调节) Gases (气 体) : Argon (氩), Hydrogen (氢), Nitrogen (氮), Compressed air (压缩空气), Oxygen (氧)	<div><div></div><div></div><div></div><div></div><div></div><div></div><div></div><div></div><div></div><div></div><div></div><div></div><div></div><div></div><div></div><div></div><div></div><div></div><div></div><div></div></div>																		
FineFocus 1600 CNC plasma cutting system 精细等离子切割系统	Arc power (电 源) : 168kw Current (电 流) : 160-600 amps (stepless 无级调节) Gases (气 体) : Argon (氩), Hydrogen (氢)	<div><div></div><div></div><div></div><div></div><div></div><div></div><div></div><div></div><div></div><div></div><div></div><div></div><div></div><div></div><div></div><div></div><div></div><div></div><div></div><div></div></div>																		
HiFocus 130 neo CNC plasma cutting system 精细等离子切割系统	Arc power (电 源) : 32kw Current (电 流) : 20-130A Gases (气 体) : Oxygen (氧), Air (空气), Nitrogen (氮), Argon (氩), Hydrogen (氢)	<div><div></div><div></div><div></div><div></div><div></div><div></div><div></div><div></div><div></div><div></div><div></div><div></div><div></div><div></div><div></div><div></div><div></div><div></div><div></div><div></div></div>																		
HiFocus 160i neo CNC plasma cutting system 精细等离子切割系统	Arc power (电 源) : 38kw Current (电 流) : 10-160A Gases (气 体) : Oxygen (氧), Air (空气), Nitrogen (氮), Argon (氩), Hydrogen (氢)	<div><div></div><div></div><div></div><div></div><div></div><div></div><div></div><div></div><div></div><div></div><div></div><div></div><div></div><div></div><div></div><div></div><div></div><div></div><div></div><div></div></div>																		
HiFocus 280i neo CNC plasma cutting system 精细等离子切割系统	Arc power (电 源) : 67 kw Current (电 流) : 20-280A Gases (气 体) : Oxygen (氧), Air (空气), Nitrogen (氮), Argon (氩), Hydrogen (氢)	<div><div></div><div></div><div></div><div></div><div></div><div></div><div></div><div></div><div></div><div></div><div></div><div></div><div></div><div></div><div></div><div></div><div></div><div></div><div></div><div></div></div>																		
HiFocus 360i neo CNC plasma cutting system 精细等离子切割系统	Arc power (电 源) : 87 kw Current (电 流) : 20-360A Gases (气 体) : Oxygen (氧), Air (空气), Nitrogen (氮), Argon (氩), Hydrogen (氢)	<div><div></div><div></div><div></div><div></div><div></div><div></div><div></div><div></div><div></div><div></div><div></div><div></div><div></div><div></div><div></div><div></div><div></div><div></div><div></div><div></div></div>																		
HiFocus 440i neo CNC plasma cutting system 精细等离子切割系统	Arc power (电 源) : 127 kw Current (电 流) : 20-440A Gases (气 体) : Oxygen (氧), Air (空气), Nitrogen (氮), Argon (氩), Hydrogen (氢)	<div><div></div><div></div><div></div><div></div><div></div><div></div><div></div><div></div><div></div><div></div><div></div><div></div><div></div><div></div><div></div><div></div><div></div><div></div><div></div><div></div></div>																		
HiFocus 600i neo CNC plasma cutting system 精细等离子切割系统	Arc power (电 源) : 180 kw Current (电 流) : 600 A Gases (气 体) : Oxygen (氧), Air (空气), Nitrogen (氮), Argon (氩), Hydrogen (氢)	<div><div></div><div></div><div></div><div></div><div></div><div></div><div></div><div></div><div></div><div></div><div></div><div></div><div></div><div></div><div></div><div></div><div></div><div></div><div></div><div></div></div>																		

抽烟工作台

Fume Extraction Table

- ECOTAB[®] 抽烟工作台适用于:

-氧燃气切割

-等离子切割

-激光切割
- The ECOTAB[®] fume extraction table system is suitable for these processes:

-Oxy-fuel cutting

-Plasma cutting

-Laser cutting

在等离子切割时，会释放出大量铁、氧化铁及有害的镍铬粉末。这些粉末会由ECOTAB[®]捕捉并过滤。滤芯材料可过滤小到 0.3μm 的颗粒，过滤效率可达99.97%。

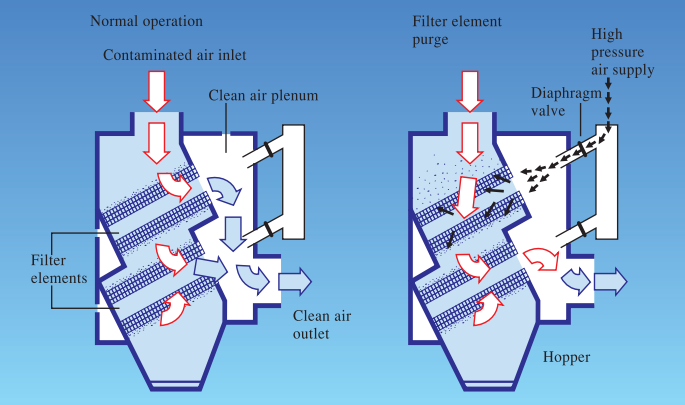
配有火花捕捉器的旋流分离器及滤芯系统被实际证明为去除各类粉尘的理想装置。

滤芯配有自动清洁装置。

Large quantities of iron- and iron oxide dust as well as especially problematical CrNi dust are released during plasma cutting. These are captured by the ECOTAB[®] and fed to the fan/filter system. The ultra fine filter material has a separation factor of 99.97% with particles 0.3μm.

A combination of a cyclonic separator with spark arrestor and a cartridge filter unit has been proved in practice as the ideal way of removing both coarse and very fine, hard to filter particles.

The filter is kept functional with a self-cleaning device.



我们的客户遍天下

A selection of our customers all around the world



上海振华港机
Zhenhua Port Machinery



萬順昌-瑞爾盛
中國有限公司
VSC



北京福田农业装备
北京福田潍坊
农业装备分公司
Beijing Futian



中国航天科技集团
China Aerospace Technology Group



大连新船集团
Dalian Dew Shipyard Group



上海胜代机械
Shanghai Katsushiro Machinery



江苏大明金属制品
Jiangsu Daming Metal Products



三星重工业
三星重工业 (宁波)
Samsung Heavy Industries
(Ningbo)



郑州煤矿机械集团股份有限公司
Zhengzhou Mine Machinery
Group Co., Ltd



广州广船国际
Guangzhou Shipyard
International



中联重科
Zhonglian Holding Group



中国第一重
型机械集团
China No.1 Heavy Machinery Group



广西柳工机械股份有限公司
Guangxi Liugong Machinery



长春轨道客车
股份有限公司
ChangChun Railway Vehicles Co., Ltd.



中山中艺
Zhong Yi



东方汽轮机厂
Dongfang Steamer Machine Works



渤海船舶重工有限责任公司
Bohai Shipbuilding Heavy
Industry Co., Ltd.



双良集团
SHUANGLIANG GROUP
双良集团



株洲电力机车厂
Zhuzhou Electric Locomotive works



上海外高桥造船有限公司
Shanghai Waigaoqiao Ship Building



上海重型机器厂
Shanghai Heavy Machinery Plant



巴特勒
(上海) 有限公司
Butler (Shanghai) Ltd.



江南船厂
Jiangnan Shipyard



上海龙工机械
Shanghai Longong Machinery



徐工集团
Xugong Group



上海维蒙特异型钢管
Shanghai Valmont sst



北海船厂
Beihai Shipyard



河南省卫华起重有限公司
Henan Weihua Crane Co., Ltd.



大连机车车辆有限公司
Dalian Locomotive & Rolling
Stock Co., Ltd.



上海舒勒压力机
Shanghai Schuler Precresses



上海希科水电设备
Shanghai Hydro-Power
Equipment Company.



中国石化集团第二建设公司
Procurement & Equipment
Management Company of SCC



三一重工
股份有限公司
Sany Heavy Industry Co., Ltd.



中國鋼鐵
CHINA STEEL



韩国大宇造船
Daewoo Shipyard Korea



印度科欣船厂
Cochin Shipyard Limited, India



印度Escort JCB公司
Escort JCB, India Railway



常石造船株式会社
Tsuneshi Corporation



新光钢铁股份有限公司
Hsin Kuang Steel Co., Ltd.



清钢材株式会社
Suga



东一产业株式会社
Dong Il Industrial Co., Ltd.



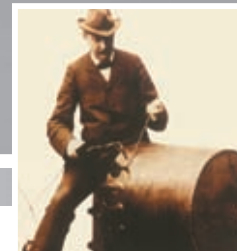
印度铁路
Cofmow, India Railway



韩国现代重工
Hyundia Heavy Industries



韩国浦项制铁
Pohang Iron & Steel
Co., Ltd. Korea



梅塞尔公司创史人阿道夫·梅塞尔
The founder of Messer:
Adolf Messer



1902年获得氧燃气切割枪专利证书
Received the patent of oxyfuel cutting torch in 1902



1907年发明的机械式切割机
Mechanical cutting machine
invented in 1907



1948年梅塞尔公司厂貌
The outlook of Messer factory in 1948

无论在造船、铁路、工程机械还是机械制造、钢结构行业，梅塞尔都能为您提供完善的数控切割解决方案。

Even for the toughest tasks in the fields of shipbuilding, railway industry, construction machinery, mechanical manufacturing or steel structures, Messer is your best partner to supply perfect CNC cutting solutions.

造船行业一直是梅塞尔重要客户，在过去的五年中我们为中国、韩国、日本、印度等国的船厂生产了几百台切割机

早在1986年梅塞尔的水下等离子切割机就落户长春客车厂，开创了列车焊接转向架的生产新工艺。今天，梅塞尔的各种切割机服务于铁道系统的几十个工厂

工程机械的发展与我们息息相关，梅塞尔有几百台火焰等离子切割机服务于国内外各大工程机械厂

The Shipbuilding Industry is one of the most important customer of Messer. In the last five years, we manufactured dozens of CNC cutting machines for the shipyards in China, Korea, Japan, India etc.

In 1986, Messer sold its first under-water plasma cutting machine to Changchun Railway Passenger Car Company and invented the new production technology for welding the rotary frames for railway trains. Today, a large number of cutting machines from Messer are serving in tens of factories in the railway industry!

Messer is closely linked with the development of policy-marking construction machinery. Hundreds of oxyfuel and plasma cutting machines from Messer (Kunshan) are currently serving in big mechanical engineering factories in China and abroad.